

PremiumVCEdump

PremiumVCEDump

> Contact Us

Login / Register

Search...



HOME

ALL VENDORS

GUARANTEE

FAQ

TESTIMONIALS

CART (0)

Pass Your Next Certification Exam Fast!

Everything you need to prepare, learn & pass your certification exam easily.

365 days free updates. First attempt guaranteed success.

Try **Desktop Test Engine** before you buy

Instant Download



After Payment, our system will send you the products you purchase in mailbox in a minute after payment. If not received within 2 hours, please contact us.

365 Days Free Updates



Free update is available within 365 days after your purchase. After 365 days, you will get 50% discounts for updating.



Money Back Guarantee

Full refund if you fail the corresponding exam in 60 days after purchasing. And Free get any another product.



Security & Privacy

We respect customer privacy. We use McAfee's security service to provide you with utmost security for your personal information & peace of mind.

<http://www.premiumvcedump.com/>

High-Quality Certification Exam Premium VCE Braindumps materials

Exam : **PL-500-German**

Title : Microsoft Power Automate
RPA Developer (PL-500
Deutsch Version)

Vendor : Microsoft

Version : DEMO

QUESTION NO: 1

Sie müssen die Ursache für das SMSApp-Dateneingabeproblem ermitteln. Was ist die Grundursache?

- A. Die DLP-Richtlinie, die den Desktop Flow Connector enthält, wurde gelöscht.
- B. Die Standardrichtliniengruppe ist auf „Blockiert“ eingestellt.
- C. Der Desktop-Flow wurde nicht mit dem Finanzsachbearbeiter geteilt.
- D. Der Power Automate Management Connector ist der Kategorie „Business“ zugeordnet.

Answer: B

Explanation:

According to the scenario, the SMSApp data entry issue occurred after a DLP policy change that excluded the development environment from its scope. This means that any desktop flow that uses connectors in the development environment will be blocked by the DLP policy. Therefore, the root cause of the issue is option D.

Topic 1, Contoso Pharmaceuticals

Background

Contoso Pharmaceuticals distributes specialty pharmaceuticals, ingredients, and raw materials throughout North America. The company has 33 offices and 12 warehouses across the US, Mexico, and Canada. As their customers' needs grow in sophistication, Contoso wants to delight customers with breakthrough products, exceptional service, and on-time delivery of materials. They want to automate time-consuming and manual processes that are prone to error. Contoso wants to consolidate and automate ordering and fulfillment processes.

* The company has a fleet of 500 delivery trucks. The company has 150 drivers and uses third-party contractors to deliver goods.

* The company has 400 warehouse workers and 30 finance clerks.

* Contoso has 85 sales representatives and 50 customer service representatives. Sales representatives spend most of their time on the road visiting customers or prospects.

* The IT department consists of four system administrators and six system analysts.

Current environment

Overview

Contoso Pharmaceuticals has a custom enterprise resource management (ERP) system. It is difficult to integrate other applications and services with the system. Office staff manually key in purchase orders, customer orders, and invoices after they receive a scan or hard copy of an agreement.

Applications

* The company uses a custom supplier management system named SMSApps that runs on each user's workstation. The system is costly to run and maintain. SMSApp does not have an API.

* Sales representatives manage customer requests by using Dynamics 365 Sales.

* Contoso has Microsoft Power Platform development, user acceptance testing (UAT), and production environments.

* Administrators create one Accounts Payable (AP) mailbox for each environment to support testing.

* The use of a DLP policy and Desktop Flow development is specified as part of the automation requirements.

Business process

1. Sales representatives create quotes by using a Microsoft Word document template. The template allows representatives to include product quantity, and cost estimation details that will be needed to fulfil an order. The representative converts quotes to a PDF file and emails the file to the customer for approval.
2. The sales representative alerts the finance team about the new order and emails the finance team a copy of the quote for processing.
3. The finance team prints the quote and manually creates a purchase order (PO) into SMSApp to request materials from a known and trusted vendor.
4. The SMSApp distributes the PO to stakeholders. The system sends a copy to a shared finance team mailbox.
5. Once a PO is fulfilled by a vendor, the system sends an email to the finance mailbox. The finance team releases an order to the warehouse.
6. Materials are shipped from the vendor to one of Contoso's warehouses. Warehouse workers enter key information from the waybill into SMSApp. The materials are unloaded and racked in the warehouse until they are shipped to customers.
7. Upon checking for new daily orders in SMSApp, they see an open order is pending that is awaiting the newly received materials
8. The Warehouse worker loads an order onto a truck for delivery and marks the order as complete in SMSApp.
9. Sales representatives provide fulfillment status and tracking information for orders.
10. A finance clerk prepares an invoice and sends the invoice to the customer by email. The clerk sends a copy of the email to the shared AP mailbox.
11. The AP team monitors the shared mailbox to confirm that the customer has paid the invoice.

Requirements

Functional Requirements

- * Large volume orders must be processed before other orders.
- * Invoices must be cross-checked with received items against packing slip for shipments.
- * The finance team must be able to analyze patterns in transactional data to conduct fraud prevention activities.
- * You must automate the process of entering data about incoming orders into SMSApp.
- * The solution must follow the principle of least privilege.

Purchase Order Quantity flow

- * You must create an unmanaged solution to update purchase order details in SMSApp. The flow must use a manual trigger.
- * Members of Accounts Payable team will be testers for the solution. They must be able to access the Purchase Order Quantity flow.

Flow for processing invoice data

- * You must create a flow to monitor the AP mailbox. When an invoice arrives as an attachment in the inbox, the flow must automatically process the invoice data by using a form processing model. The flow must cross-check the received items against the packing slip.
- * You must use different Accounts Payable email addresses for development user acceptance testing (UAT), and production environments.
- * You must use an environment variable to represent the Accounts Payable mailbox for the

environment in use.

* You must be able to use the environment variable across multiple cloud flows, a custom connector, and a canvas app.

Technical Requirements

* Users must only be allowed to connect to and access systems that are required for the employee to perform required job tasks.

* All automation flows must be either co-owned or shared between staff.

* All employees must be able to access the new environment to build personal productivity automations.

* You must distribute the workload for desktop flows to optimize productivity.

Monitor flows

* All data extracted from Invoices should be stored in a custom Dataverse entity. Only employees who are part of Finance role should be able to edit all Invoice data but must be prevented from creating or deleting one.

Issues

Invoice data

All users report that they can see and modify invoice data.

New environment

* The IT department creates a new environment. A user creates a cloud flow named FlowA in the environment that triggers a desktop flow. A user reports that the cloud flow does not trigger the desktop flow to run.

* Microsoft Dataverse is not provisioned in the new environment. You attempt to create a Desktop flow in the default environment but receive a Dataverse error message and cannot proceed.

Data entry automation flow

An administrator runs a new desktop flow in the development environment to automate data entry into SMSApp. The flow automatically reverts to a suspended state.

Order fulfillment flow

You must automate the customer communication process by using an unattended desktop flow. The flow must check the fulfillment status of each active order in SMSApp. If an order is fulfilled, the flow must send the customer an email that includes tracking information for their order.

QUESTION NO: 2

Sie müssen den Ablauf für die Verarbeitung von Rechnungen konfigurieren, die im AP-Postfach eingehen. Welche drei Elemente sollten Sie verwenden? Jede richtige Antwort stellt einen Teil der Lösung dar. HINWEIS: Jede richtige Auswahl ist einen Punkt wert.

A. Dokumenttyp

B. Standort

C. Seiten

D. AI-Modell

E. Formulartyp

F. Formular

Answer: B,C,D

Explanation:

To configure a flow for processing invoices that arrive in an email, you need to use three elements: document type, AI model, and form type.

Document type specifies what kind of document you want to process, such as invoices, receipts, or business cards.

AI model determines how the document data will be extracted and analyzed, such as using a prebuilt model or a custom model.

Form type defines how the extracted data will be mapped to a table in Dataverse, such as using a standard form or a custom form.

QUESTION NO: 3

Sie müssen Sicherheitsmaßnahmen implementieren, um das Problem mit den Rechnungsdaten zu beheben

Welche drei Aktionen sollten Sie durchführen? Jede richtige Antwort stellt einen Teil der Lösung dar.

HINWEIS: Jede richtige Auswahl ist einen Punkt wert.

- A. Deaktivieren Sie die Berechtigungen zum Erstellen und Löschen. Legen Sie die Leseberechtigungs- und Schreibberechtigungsrechte auf Organisation fest.
- B. Wählen Sie die Rolle „Finanzen“ aus, wählen Sie „Benutzerdefinierte Entitäten“ aus und navigieren Sie zur Tabelle.
- C. Navigieren Sie im Microsoft Power Platform Admin Center zum Abschnitt „Benutzer“.
- D. Navigieren Sie im Microsoft Power Platform Admin Center zum Abschnitt „Sicherheitsrollen“.
- E. Löschen Sie die Berechtigungen zum Erstellen und Löschen. Legen Sie die Leseberechtigungs- und Schreibberechtigungsrechte auf „Geschäftseinheit“ fest.
- F. Wählen Sie die Rolle „Finanzen“ aus, wählen Sie „Kerndatensätze“ aus und navigieren Sie dann zur Tabelle.

Answer: B,D,E

Explanation:

To implement security to resolve the invoice data issue, you need to perform three actions: In Microsoft Power Platform admin center, navigate to the Security roles section. This is where you can manage the security roles for your environment and assign them to users or teams.

Select the Finance role, select Custom Entities and navigate to the table. This is where you can configure the access level for each entity in your environment based on your security role.

Clear the Create and Delete permissions. Set the Read permission and Write permission values to Business unit. This will restrict users with this role from creating or deleting records in this table, but allow them to read or write records within their business unit.

QUESTION NO: 4

Sie müssen die Lösung konfigurieren.

Was sollten Sie verwenden? Um zu antworten, wählen Sie im Antwortbereich die entsprechenden Optionen aus.

HINWEIS: Jede richtige Auswahl ist einen Punkt wert.

Requirement	Option
Automate the SMSApp data entry process.	Action Workflow Desktop flow Mobile task flow
Handle invoices sent to the Accounts payable mailbox.	When a folder is created When an item is created When a new email arrives When a new email arrives in a shared mailbox
Implement the order process.	Workflows Instant flows Business rules Business process flows

Answer:

Requirement	Option
Automate the SMSApp data entry process.	Action Workflow Desktop flow Mobile task flow
Handle invoices sent to the Accounts payable mailbox.	When a folder is created When an item is created When a new email arrives When a new email arrives in a shared mailbox
Implement the order process.	Workflows Instant flows Business rules Business process flows

QUESTION NO: 5

Sie müssen das Problem mit dem Erfüllungsstatusfluss lösen.

Welche drei Aktionen sollten Sie durchführen? Jede richtige Antwort stellt einen Teil der Lösung dar.

HINWEIS: Jede richtige Auswahl ist einen Punkt wert.

- A. Stellen Sie sicher, dass die Flow-Instanz nicht länger als drei Stunden in der Warteschlange bleibt.
- B. Stellen Sie sicher, dass alle Benutzer vom Zielcomputer abgemeldet sind.
- C. Verwenden Sie für alle Maschinen unterschiedliche lokale Windows-Konten.
- D. Stellen Sie sicher, dass der Flow keine erhöhten Berechtigungen verwendet.
- E. Lösen Sie den Fluss mithilfe eines lokalen Datengateways aus.

Answer: B,C,E

Explanation:

To resolve the fulfillment status flow issue, you need to perform three actions:
 Ensure that all users are signed out from the target machine. This will prevent any interference or interruption from other users who might be logged in to the same machine where the desktop flow is running1.

Use different local Windows accounts for all machines. This will ensure that each machine has a unique identity and credentials for running desktop flows1.

Ensure that the flow is not using elevated privileges. This will avoid any security risks or errors that might occur when running desktop flows with administrator rights1.

QUESTION NO: 6

Sie müssen die Ursachen für die gemeldeten Probleme ermitteln.

Was sind die Ursachen? Um zu antworten, wählen Sie im Antwortbereich die entsprechenden Optionen aus.

HINWEIS: Jede richtige Auswahl ist einen Punkt wert.

Answer Area

Issue	Cause
New environment	Flow checker did not run. Admin mode is turned on. Admin mode is turned off. A connector was added to a DLP policy.
FlowA	The user is in the wrong environment. The user does not have the correct permissions.
Dataverse error	There is no Microsoft Dataverse database provisioned. The user did not sign into Power Automate by using a Microsoft work account. Microsoft Dataverse was not shared with the user from the development environment.

Answer:

Answer Area

Issue	Cause
New environment	Flow checker did not run. Admin mode is turned on. Admin mode is turned off. A connector was added to a DLP policy.
FlowA	The user is in the wrong environment. The user does not have the correct permissions.
Dataverse error	There is no Microsoft Dataverse database provisioned. The user did not sign into Power Automate by using a Microsoft work account. Microsoft Dataverse was not shared with the user from the development environment.

QUESTION NO: 7

Sie müssen Berechtigungen für den Bestellmengenfluss konfigurieren. Welche Berechtigung sollten Sie vergeben?

- A. Miteigentümer
- B. Nur ausführender Benutzer

- C. Besitzer
- D. Benutzer

Answer: B

Explanation:

To configure permissions for the Purchase order quantity flow, you should assign the run-only user permission to the finance clerk. This will allow them to run the flow without being able to edit or share it¹. The other permissions are not suitable for this scenario because: Co-owner permission would give the finance clerk full access to edit, share, and delete the flow, which is not necessary or desirable¹.

Owner permission would transfer the ownership of the flow to the finance clerk, which would remove your access and control over it¹.

User permission would not allow the finance clerk to run the flow at all, only to view it¹.

QUESTION NO: 8

Sie müssen sicherstellen, dass die Lösung das richtige Kreditorenpostfach verwendet.

Welche drei Aktionen sollten Sie durchführen? Jeder richtige Antwortteil der Lösung,

HINWEIS: Jede richtige Auswahl ist einen Punkt wert.

- A. Legen Sie den aktuellen Wert für das Kreditorenpostfach in der Umgebung fest.
- B. Legen Sie den Standardwert für das Kreditorenpostfach in der Umgebung fest.
- C. Schalten Sie die Cloud Flows aus und dann wieder ein.
- D. Verwenden Sie separate Umgebungsvariablen für den Cloud-Flow und die Canvas-App.
- E. Verwenden Sie eine Umgebungsvariable sowohl für die Cloud-Flows als auch für die Canvas-App.

Answer: A,C,E

Explanation:

To ensure that the solution uses the correct accounts payable mailbox, you need to perform three actions:

Set the current value for the accounts payable mailbox in the environment. This will update the value of the environment variable that stores the email address of the accounts payable mailbox¹.

Turn off and then turn on the cloud flows. This will refresh the cloud flows and make them use the updated value of the environment variable¹.

Use one environment variable for both the cloud flows and the canvas app. This will ensure consistency and avoid duplication of data across different components of your solution¹.

QUESTION NO: 9

Sie müssen eine Lösung implementieren, um die Priorität eingehender Bestellungen zu verwalten.

Welche drei Aktionen sollten Sie nacheinander ausführen? Um zu antworten, verschieben Sie die entsprechenden Aktionen aus der Aktionsliste in den Antwortbereich und ordnen Sie sie in der richtigen Reihenfolge an.

Actions	Answer area
Edit the desktop flow.	
Edit the cloud flow.	
Modify the Run a flow built with Power Automate for desktop action.	
Change the desktop flow's priority to High.	
Set the priority value based on the volume for an order.	
Set the desktop flow's queue order based on the volume for an order.	
Select the desktop flow and then select Move to top .	

Answer:

Answer Area

Edit the cloud flow.
Modify the Run a flow built with Power Automate for desktop action.
Set the priority value based on the volume for an order.

- 1 - Edit the cloud flow.
- 2 - Modify the Run a flow built with Power Automate for desktop action.
- 3 - Set the priority value based on the volume for an order.

Topic 2, City Power and Light

Background

City Power and Light is one of the biggest energy companies in North America. They extract, produce and transport oil. The company has more than 50 offices and 100 oil extraction facilities throughout the United States, Canada, and Mexico. They use railways, trucks, and pipelines to move oil and gas from their facilities.

The company provides the following services:

- * Produce oil from oil sands safely, responsibly, and reliably
- * Refine crude oil into high-quality products
- * Develop and manage wind power facilities.
- * Transport oil to different countries/regions.

City Power and Light uses various Microsoft software products to manage its daily activities and run its machine-critical applications.

Requirements

ManagePipelineMaintenanceTasks

A user named Admin1 creates a cloud flow named ManagePipelineMaintenanceTasks. Admin1 applies a data loss prevention (DLP) policy to the flow. Admin1 shares the flow with a user named PipelineManager1 as co-owner. You must determine the actions that

PipelineManager can perform.

MaintenanceScheduler

You create a cloud flow that uses a desktop flow. The desktop flow connects to third-party services to fetch information. You must not permit the desktop flow to run for more than 20 minutes.

You must configure sharing for MatinenanceScheduler to meet the following requirements:

- * User1 must be able to work with you to modify the desktop flow.
- * User2 must be able to access and review the run history for the flow.
- * You must grant User3 permissions to run but not modify the desktop flow.

ERPDataOperations flow

City Power and light uses an enterprise resource planning (ERP) system. The ERP system does not have an API.

Each day the company receives an email that contains an attachment. The attachment lists orders from the company's rail transportation partners. You must create an automation solution that reads the contents of the email and writes records to the ERP system. The solution must pass credentials from a cloud flow to a desktop flow.

RailStatusUpdater

City Power and Light actively monitors all products in transit. You must create a flow named RailStatusUpdater that manages communications with railways that transport the company's products. RailStatusUpdater includes five desktop flow actions.

You must run the desktop flows in attended mode during testing. You must run the desktop flows in unattended mode after you deploy the solution. You must minimize administrative efforts.

Packaging

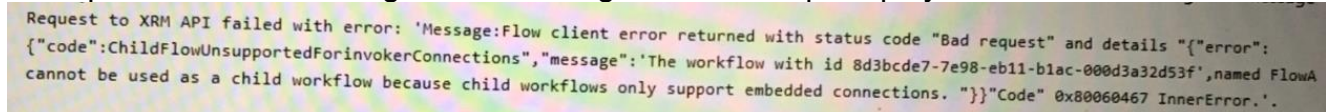
You must package the automations in a solution. All required components must be included in the solution.

Issues

ProductionMonitor flow

You create a cloud flow named ProductionMonitor which uses the Manually trigger a flow trigger. You plan to trigger ProductionMonitor from a cloud flow named ProdManager.

You add a Run a Child flow action in ProdManager to trigger ProductionMonitor. When you attempt to save ProdManager the following error message displays:



```
Request to XRM API failed with error: 'Message:Flow client error returned with status code "Bad request" and details {"error": {"code": "ChildFlowUnsupportedForInvokerConnections", "message": "The workflow with id 8d3bcde7-7e98-eb11-b1ac-000d3a32d53f", named FlowA cannot be used as a child workflow because child workflows only support embedded connections. "}}"Code" 0x80060467 InnerError.'
```

CapacityPlanning flow

Developers within the company use cloud flows to access data from an on-premises capacity planning system.

You observe significant increases to the volume of traffic that the on-premises data gateway processes each day. You must minimize gateway failures.

DataCollector flow

You have a desktop flow that interacts with a web form. The flow must write data to several fields on the form.

You are testing the flow. The flow fails when attempting to write data to any field on the web form.

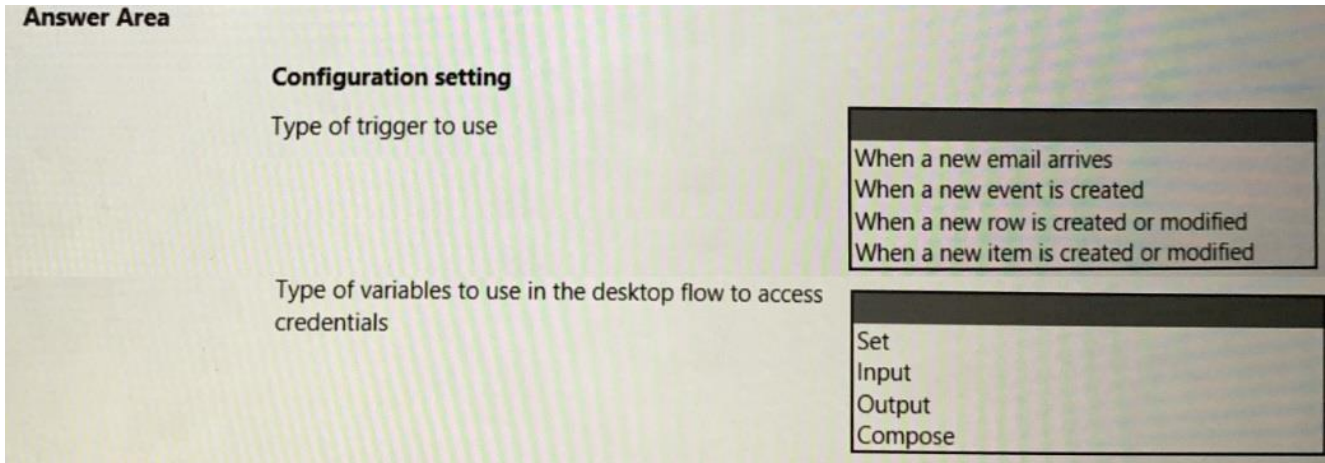
RailStatusUpdater flow

The RailStatusUpdater flow occasionally fails due to machine connection errors. You can usually get the desktop flow to complete by resubmitting the cloud flow run. You must automate the retry process to ensure that you do not need to manually resubmit the cloud flow when machine connection errors occur.

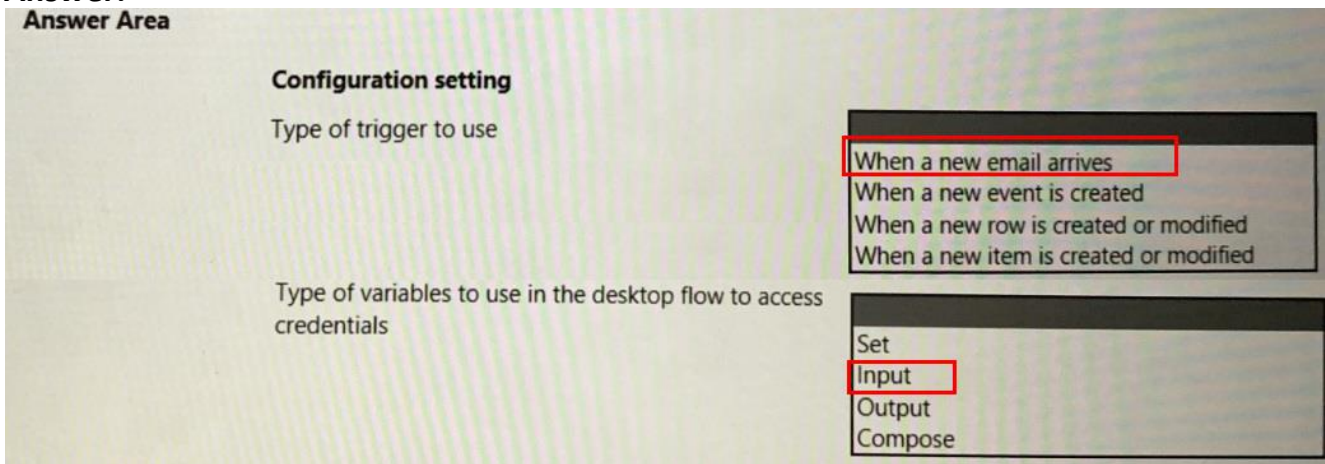
QUESTION NO: 10

Sie müssen die Lösung für den ERPDataOperations-Flow konfigurieren.

Welche Konfigurationswerte sollten Sie verwenden? Um zu antworten, wählen Sie die entsprechenden Optionen im Antwortbereich aus. HINWEIS: Jede richtige Auswahl ist einen Punkt wert.



Answer:



QUESTION NO: 11

Sie müssen den RailStatusUpdater-Cloud-Flow konfigurieren. Was sollte man tun?

- A. Erstellen Sie eine JavaScript-Funktion, um die Ausführungsmoduswerte jeder Aktion im Desktop-Flow zu aktualisieren.
- B. Erstellen Sie eine Umgebungsvariable. Aktualisieren Sie jede Desktop-Flow-Aktion, um die Variable zu lesen.
- C. Aktualisieren Sie jede Desktop-Flow-Aktion manuell, um den Ausführungsmodus zu ändern.
- D. Erstellen Sie einen Desktop-Flow, um die Ausführungsmoduswerte jeder Aktion innerhalb des Cloud-Flows zu aktualisieren.

Answer: B

Explanation:

According to the scenario, you want to run the desktop flow actions in unattended mode when the cloud flow is triggered by a schedule, and in attended mode when the cloud flow is triggered manually. To achieve this, you can create an environment variable that stores the run mode value (attended or unattended) and use it as an input for each desktop flow action. This way, you can change the run mode value dynamically without having to manually update each action.

QUESTION NO: 12

Sie müssen die Aktionen identifizieren, die PipelineManager1 ausführen kann. Welche drei Aktionen kann PipelineManager1 ausführen? Jede richtige Antwort stellt eine vollständige Lösung dar.

HINWEIS: Jede richtige Auswahl ist einen Punkt wert.

- A. Überschreiben Sie die DLP-Richtlinie.
- B. Einen Flow ändern oder löschen.
- C. Ändern Sie die Verbindungsanmeldeinformationen des Eigentümers.
- D. Laufverlauf anzeigen.
- E. Legen Sie die Cloud-Flow-Priorität fest.
- F. Andere Besitzer hinzufügen oder entfernen.

Answer: B,D,E

Explanation:

According to the scenario, PipelineManager1 is an owner of the RailStatusUpdater cloud flow. As an owner, PipelineManager1 can perform various actions on the flow, such as modifying or deleting it, viewing its run history, and adding or removing other owners. However, PipelineManager1 cannot override the DLP policy, modify the owner's connection credentials, or set the cloud flow priority, as these actions require higher permissions or roles.

QUESTION NO: 13

Sie müssen die Desktop-Aktion für den MaintenanceScheduler-Cloud-Flow konfigurieren. Welche zwei Aktionen sollten Sie durchführen? Jede richtige Antwort stellt einen Teil der Lösung dar. HINWEIS: Jede richtige Auswahl ist einen Punkt wert.

- A. Wählen Sie die Maschineneinstellungen in Power Automate für Desktop aus.
- B. Wählen Sie die Timeout-Eigenschaft aus und aktualisieren Sie die Dauer auf PT20M.
- C. Wählen Sie die Timeout-Eigenschaft aus und aktualisieren Sie die Dauer auf P20M.
- D. Starten Sie Power Automate für den Desktop.
- E. Navigieren Sie zu den Desktop-Flow-Aktionseinstellungen im Cloud-Flow.

Answer: A,B

Explanation:

According to the scenario, you want to configure the desktop action to run on any available machine in a machine group and to time out after 20 minutes if no machine is available. To do this, you need to select machine settings in Power Automate for desktop and choose a machine group as the target device for your desktop action. Then, you need to select the Timeout property and update the duration to PT20M, which stands for 20 minutes in ISO

8601 format. You do not need to launch Power Automate for desktop or navigate to Desktop flow action settings in the cloud flow, as these steps are not relevant for configuring the desktop action. You also do not need to select C as an answer, as P20M is not a valid ISO 8601 duration format.

QUESTION NO: 14

Sie müssen das Problem mit dem Kapazitätsplanungsablauf angehen. Was sollte man tun?

- A. Erhöhen Sie die CPU und den Speicher des Computers, auf dem das Gateway gehostet wird.
- B. Erstellen Sie einen Gateway-Cluster.
- C. Konfigurieren Sie das System so, dass es Warnungen sendet, wenn das Gateway ausfällt.
- D. Erstellen Sie eine Maschinengruppe und fügen Sie der Gruppe Maschinen hinzu, um Anfragen zu bearbeiten.

Answer: B

Explanation:

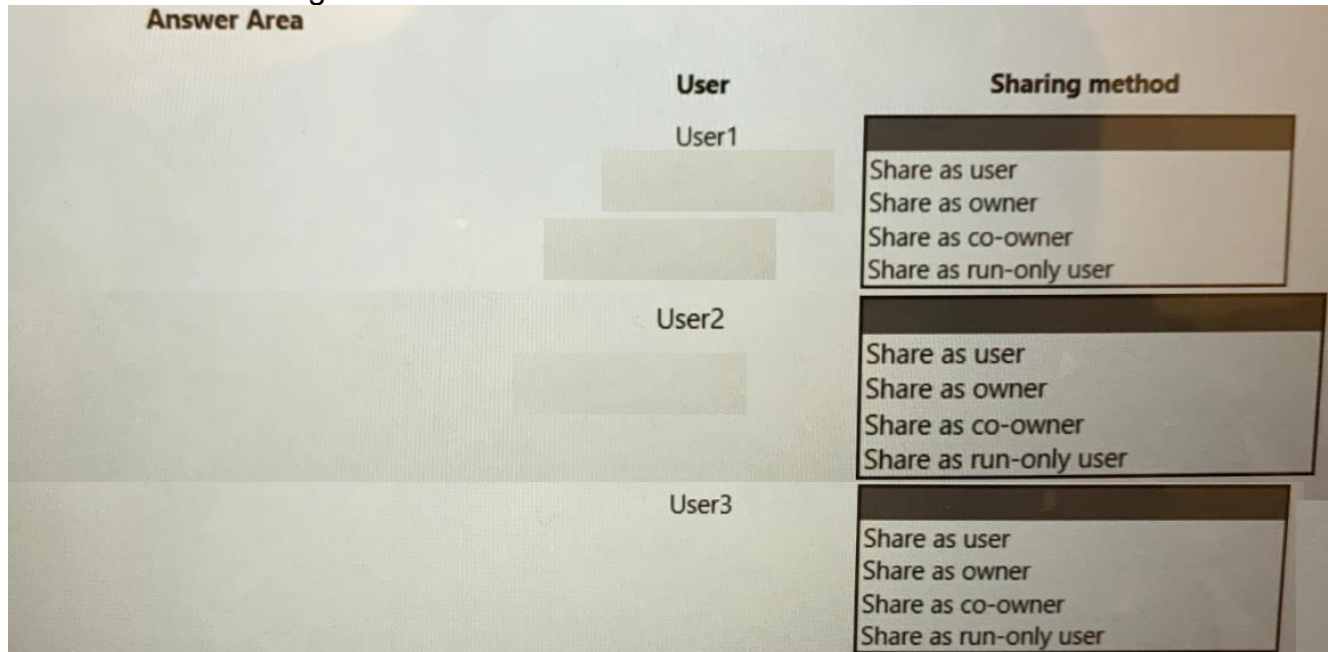
According to the scenario, the capacity planning flow fails when the gateway is offline. To avoid this issue, you can create a gateway cluster that consists of two or more gateways that share the same configuration and data sources. This way, if one gateway is offline, another gateway in the cluster can handle the requests and ensure high availability for your flow.

QUESTION NO: 15

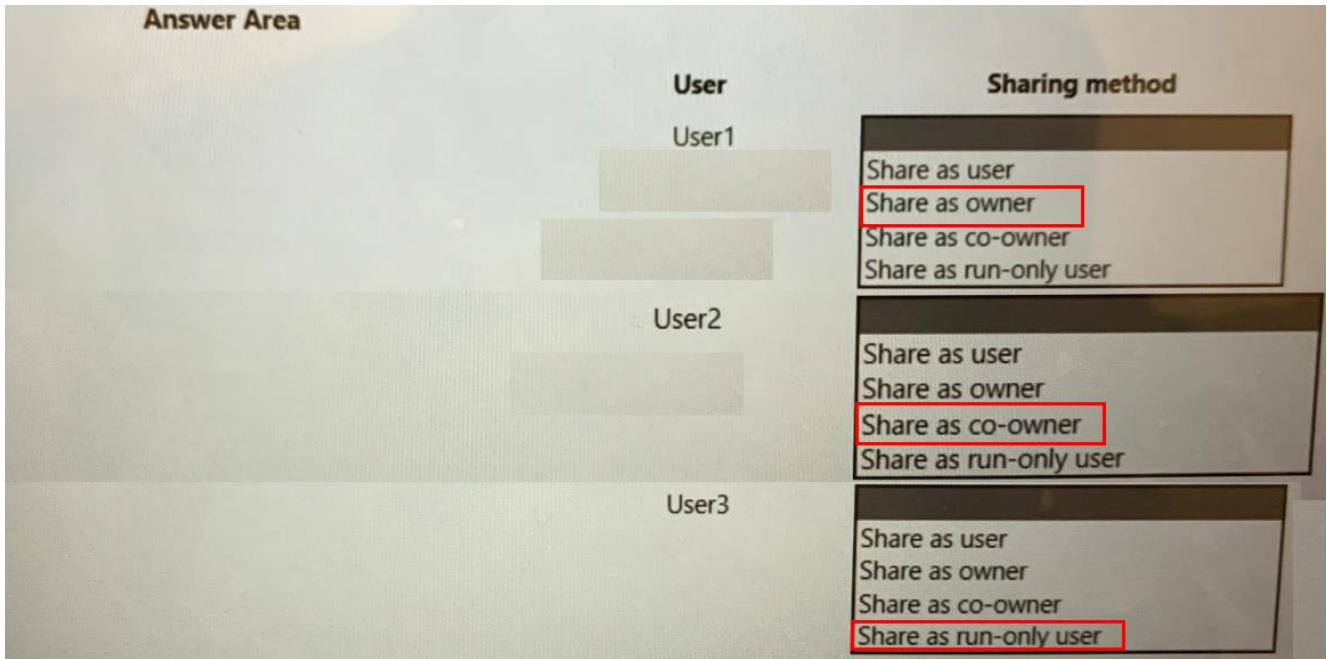
Sie müssen die Freigabe für MaintenanceScheduler konfigurieren.

Welche Freigabemethoden sollten Sie verwenden? Um zu antworten, wählen Sie im Antwortbereich die entsprechenden Optionen aus.

HINWEIS: Jede richtige Auswahl ist einen Punkt wert.



Answer:

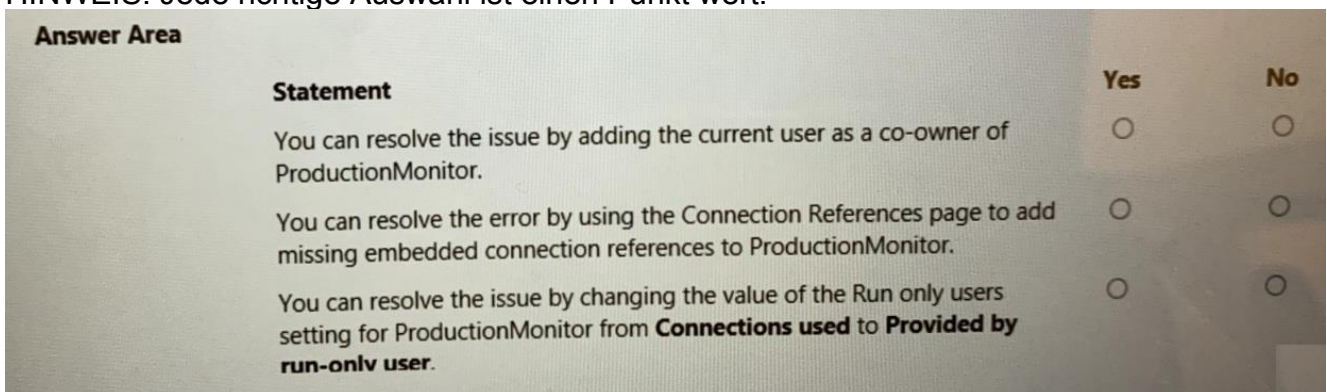


QUESTION NO: 16

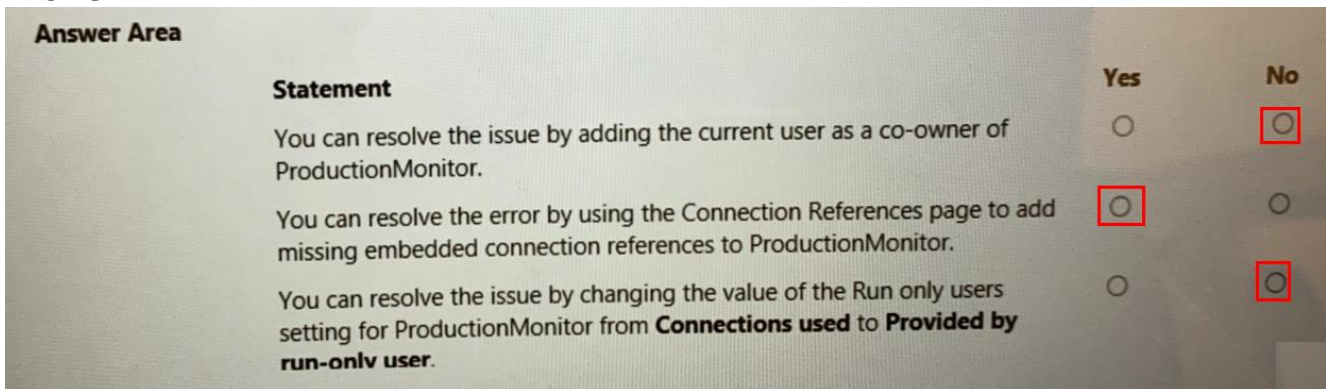
Sie müssen das Problem beim Speichern von ProdManager beheben.

Wählen Sie für jede der folgenden Aussagen Ja aus, wenn die Aussage wahr ist. Andernfalls wählen Sie Nein.

HINWEIS: Jede richtige Auswahl ist einen Punkt wert.



Answer:



QUESTION NO: 17

Sie müssen das mit dem RailStatusUpdater-Flow gemeldete Problem beheben.

Welche zwei möglichen Wege gibt es, um das Ziel zu erreichen? Jede richtige Antwort stellt

eine vollständige Lösung dar.

HINWEIS: Jede richtige Auswahl ist einen Punkt wert.

- A.** Fügen Sie die Desktop-Flow-Aktion in eine Do-bis-Schleife ein. Führen Sie es aus, bis der Desktop-Flow erfolgreich ist.
- B.** Rufen Sie einen separaten untergeordneten Cloud-Flow auf, um den Desktop-Flow ein zweites Mal auszuführen.
- C.** Erstellen Sie eine Duplikataktion für den Desktop-Flow und konfigurieren Sie die Duplikataktion so, dass sie ausgeführt wird, wenn die erste Desktop-Flow-Aktion fehlschlägt.
- D.** Erstellen Sie eine doppelte Aktion für den Desktop-Flow, die nach dem ersten Desktop-Flow ausgeführt werden soll.

Answer: A,C

Explanation:

According to the scenario, the RailStatusUpdater flow sometimes fails because of network issues that prevent it from running a desktop flow on a machine. To resolve this issue, you can use one of these two methods:

Put the desktop flow action into a Do until loop that runs until the desktop flow is successful. This way, the cloud flow will retry running the desktop flow until it succeeds or reaches a maximum number of attempts.

Create a duplicate action for the desktop flow and configure the duplicate action to run if the first desktop flow action fails. This way, the cloud flow will have a second chance to run the desktop flow if the first attempt fails.